

Play: Use a Scale-Up Grid to Plan for Implementation

1



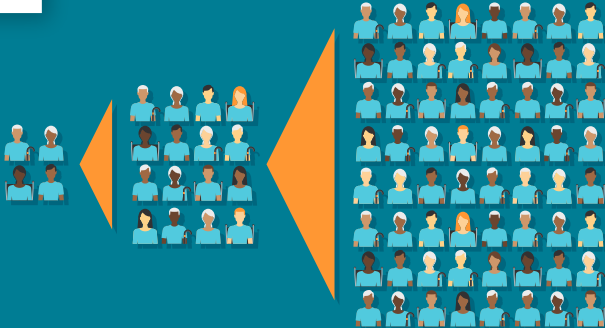
Determine the number of people who will benefit from your program when you reach full scale.

2



Identify the change areas involved in the project, such as patient identification.

3



Plan your work in each change area as your program moves from pilot to full-scale implementation.

4



Pay attention to the structural issues you may face as you scale up, such as staffing.